

# *BBAA Final Large Group Visit August 2010* *The Historic City of Celle, Lower Saxony, Germany*



The Town Bugler plays twice daily



The buildings are typical of the city centre shopping area.



The Church and the Town Hall



The Old Castle in the City Centre



Half-timbered shops



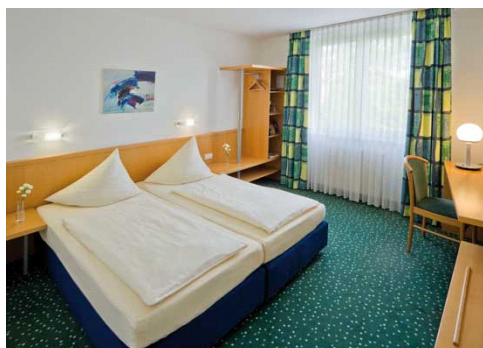
The Square and the Fountain



Half-timbered shops



The Tryp Sol-Melia Hotel



Tryp Hotel: Typical Bedroom



Part of the Restaurant



The outdoor Restaurant area

The city of Celle is in Lower Saxony *Land* (state), in north-central Germany, on the Aller River, at the southern edge of the Lüneburger Heide (Heath), northeast of Hannover. The old town, Altencelle, was founded about 1248, and Celle (founded 1292) was the residence (1371–1705) of the dukes of Brunswick-Lüneburg. The old town has many fine examples of 16th- to 19th-century half-timbered buildings, including the Hoppener Haus (1532) and the Grammar School (1603). The Parish Church (1308–1675) has the ducal burial vaults, and in the ducal palace (dating from 1292 and modified to baroque in the 17th century) is the oldest theatre in Germany still in use.